



Mark Fox Co. Real Estate

# THE PEAKS RANCH

Johnson City, TX

# THE PEAKS RANCH

[www.markfoxco.com](http://www.markfoxco.com)





# PROPERTY DETAILS

*Just 3.5 miles from Downtown Johnson City, The Peaks Ranch is a rare Hill Country offering with dramatic natural beauty, recreation, and investment potential. With elevations up to 1,764 feet, its iconic peaks provide 360° views across Blanco County.*

*Bordering the 5,500-acre Bamberger Ranch Preserve and minutes from Walnut Springs, the property overlooks Johnson City, the Pedernales River basin, and Hill Country wine country.*

## *Turnkey Access & Infrastructure:*

- *All-weather ranch roads for seamless access.*
- *Multiple build sites with sweeping views.*
- *Nearby utilities for estate, family compound, or retreat.*

## *Natural Features:*

- *Steep ridgelines and rolling terrain.*
- *Hardwood mix including rare Texas Madrone.*
- *Native grasses with cleared areas for long views.*

## *Investment Potential:*

- *Prime for luxury residential or recreational use.*
- *Close to Johnson City, Fredericksburg, and Austin.*
- *Surrounded by protected, high-value properties.*





# THE PEAKS RANCH

[www.markfoxco.com](http://www.markfoxco.com)





# THE PEAKS RANCH

[www.markfoxco.com](http://www.markfoxco.com)





# THE PEAKS RANCH

[www.markfoxco.com](http://www.markfoxco.com)

PERSONNEL



# THE PEAKS RANCH

[www.markfoxco.com](http://www.markfoxco.com)





# THE PEAKS RANCH

[www.markfoxco.com](http://www.markfoxco.com)



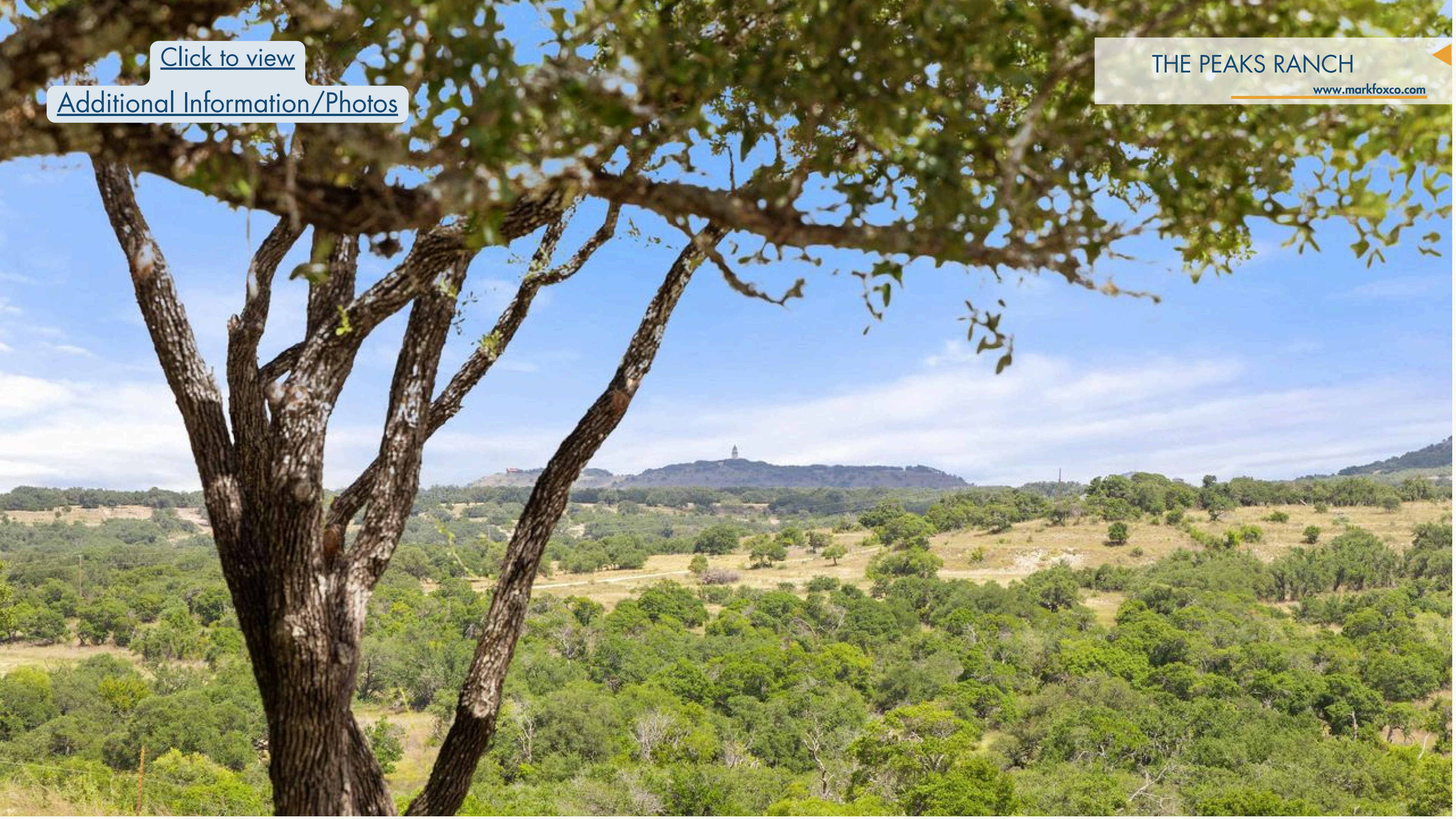


[Click to view](#)

[Additional Information/Photos](#)

THE PEAKS RANCH

[www.markfoxco.com](http://www.markfoxco.com)





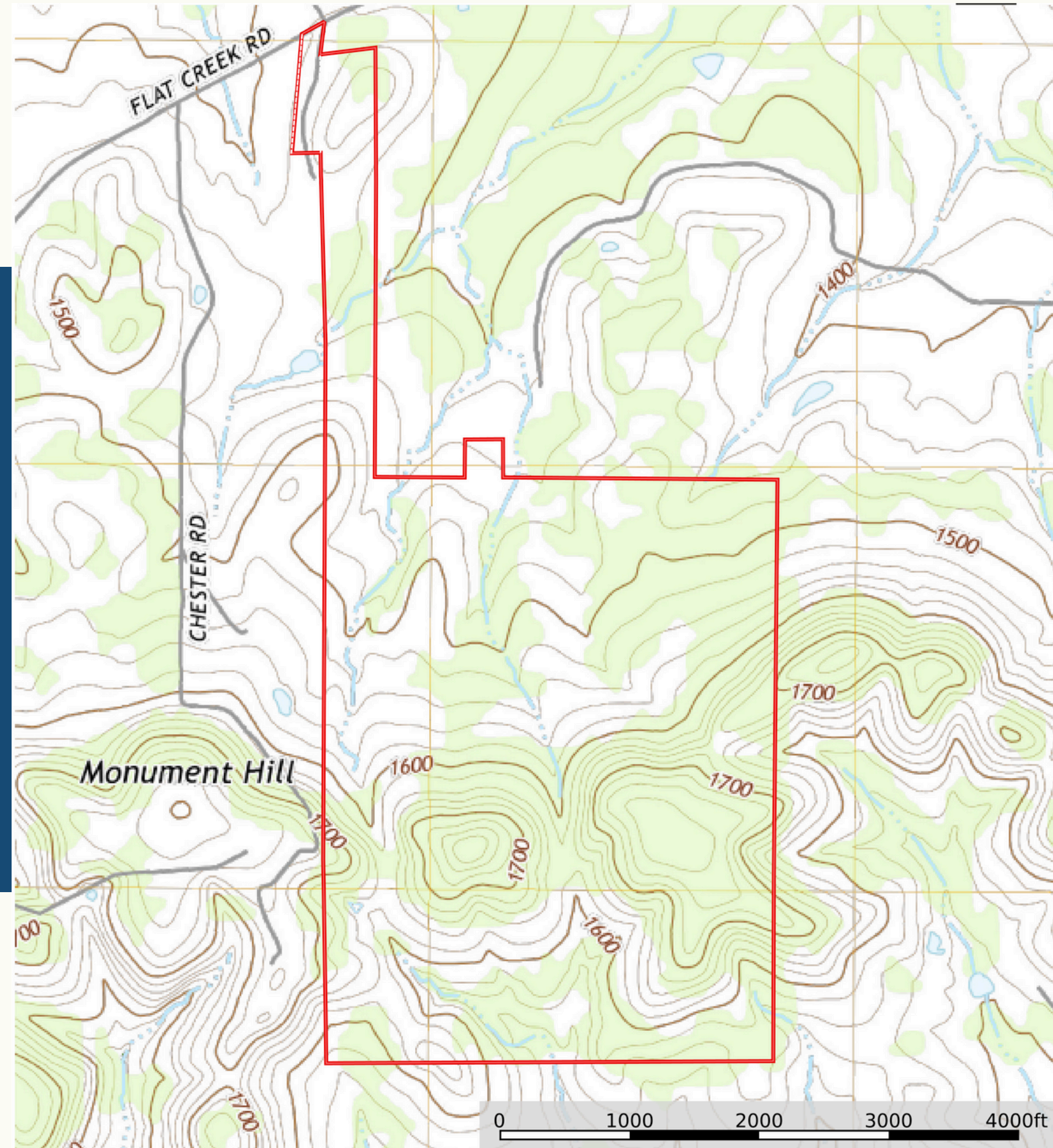
[illegible]

[www.markfoxco.com](http://www.markfoxco.com)



# THE PEAKS RANCH

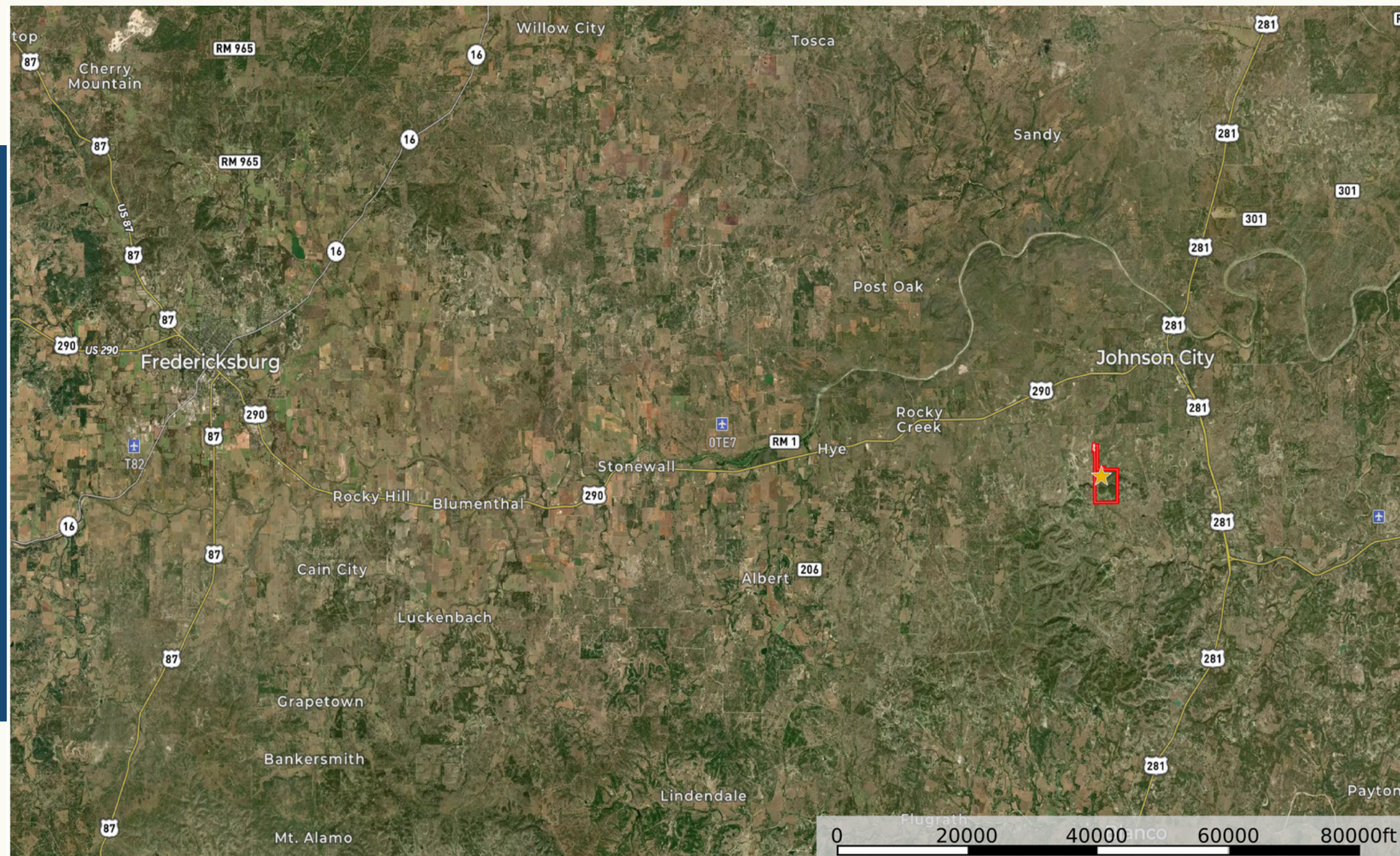
[www.markfoxco.com](http://www.markfoxco.com)





# THE PEAKS RANCH

[www.markfoxco.com](http://www.markfoxco.com)







VIEW VIDEO HERE



# LEARN MORE

Todd Fox | Farren Fox

(512) 755-4433 | (512) 755-1547

todd@markfoxco.com | farren@markfoxco.com

[www.markfoxco.com](http://www.markfoxco.com)

[markfoxco@gmail.com](mailto:markfoxco@gmail.com)

515 Hwy 281

Marble Falls, TX 78654